

# HP Production Satin Poster Paper PageWide XL Tips and Tricks



# Tips and Tricks List

1. HC Stacker Media Marks and Workaround Solutions
  - 1.1 HC Stacker Media Marks
  - 1.2 Workaround Solutions
  
2. HC Stacker Media Jams and Workaround Solutions
  - 2.1 HC Stacker Media Marks
  - 2.2 Workaround Solutions



# 1. HC Stacker Media Marks and Workaround Solutions

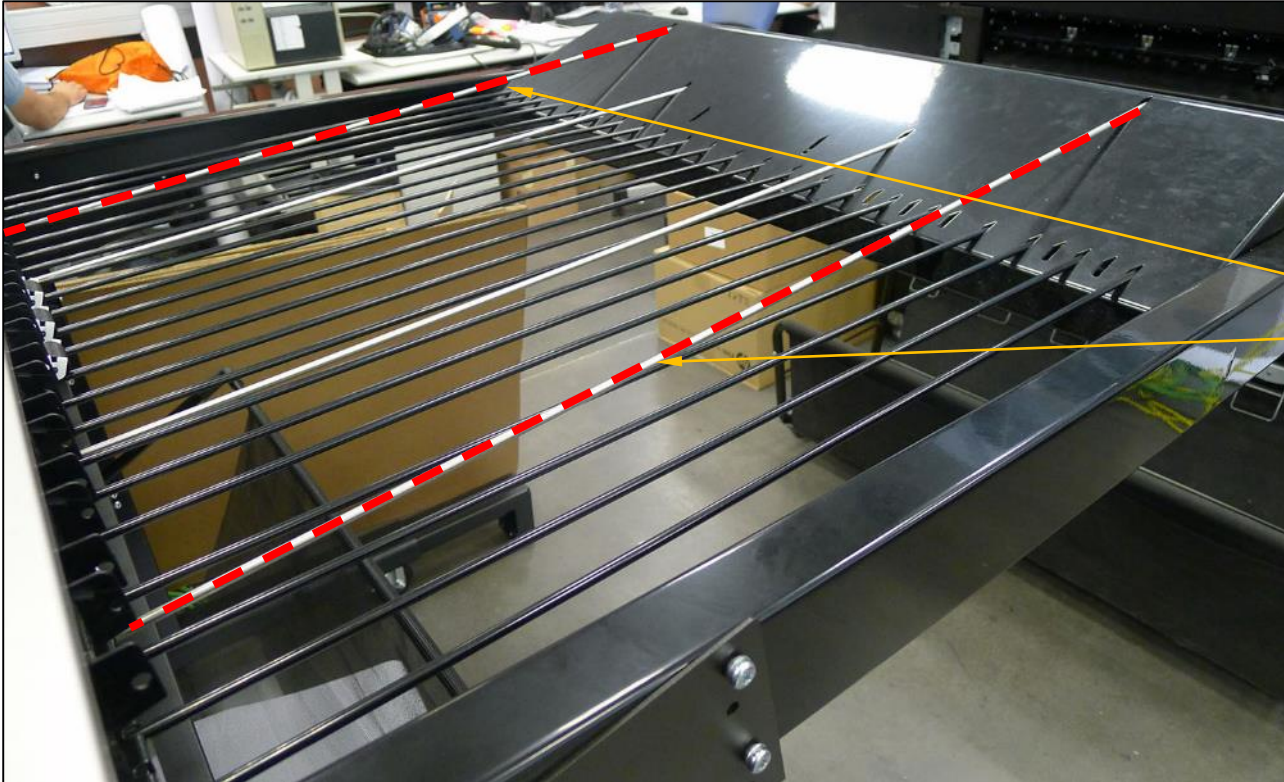


# 1.1 HC Stacker Media Marks

## HP Production Satin Poster Paper



# 1.1 HC stacker media marks (cont'd)



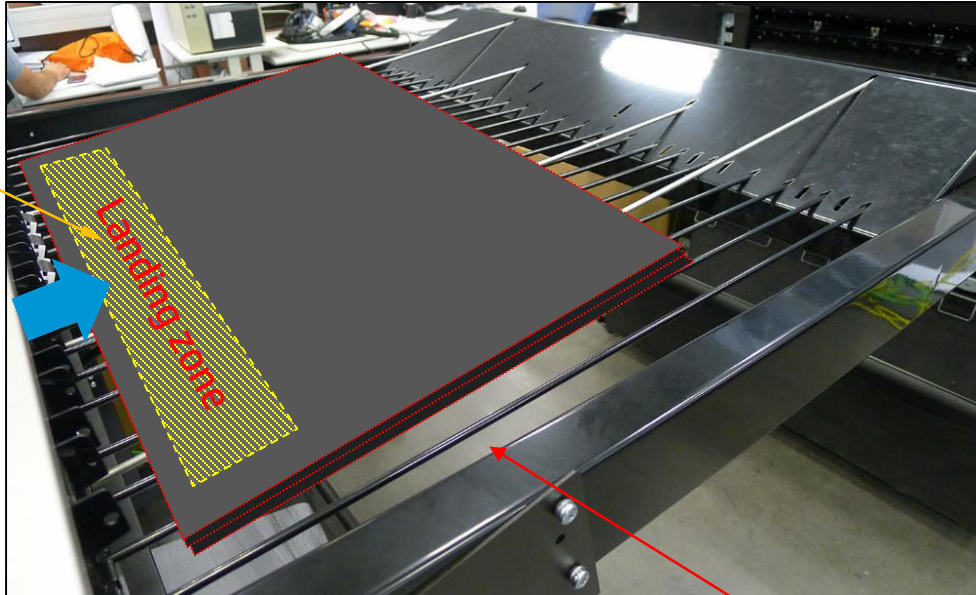
HC Stacker – De  
curl bars  
(critical areas)

# 1.1 HC Stacker Media Marks (cont'd)

Most sensitive images: High density dark flat color area fills specially in the “landing zone”

HC Stacker –  
“landing  
zone” (critical  
areas)

STACKER  
OUTPUT



HC Stacker tray



High density plot example

# 1.2 Workaround Solutions

1. Unprinted plain paper in between prints (HP Production Satin Poster Paper - HP Univ Bond – HP Production Satin Poster Paper )

Almost completely prevents marks – plain paper waste and X-put impact (still less expensive than using photo paper alone)

2. Ink Percentage decrease (100% and 80%)

80% ink limit marginal acceptable Gamut, but does not completely eliminate marks

3. Delay in between prints (30, 60, 120 seconds)

Impacts X-put (60 seconds does not completely eliminate marks / 120 seconds still visible gloss change)

4. Margin (300 mm and 400 mm)

400mm helps a lot but implies paper waste

5. Pile of Prints to Reduce Impact of HC stacker Bars

Acting as a shock absorber effect - do not completely eliminate marks



# 1.2 Workaround Solutions (cont'd)

## ➤ Unprinted plain paper in between prints

### 1. Background

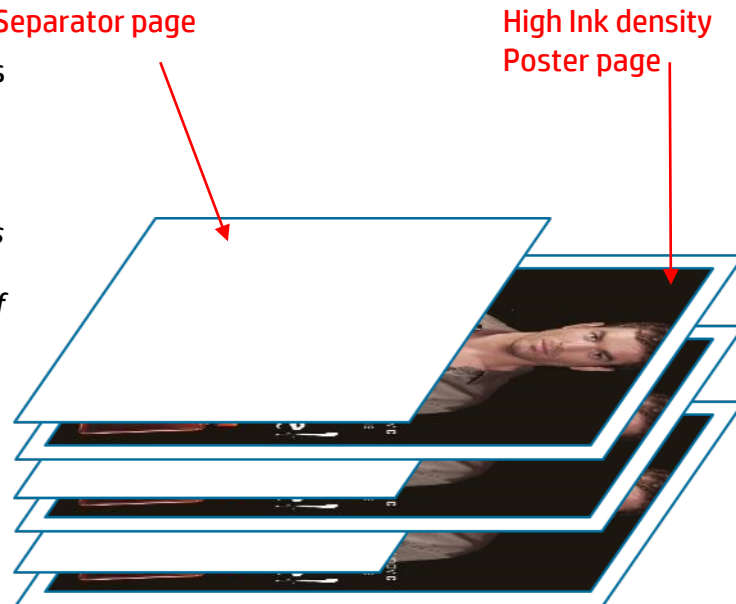
HP PageWide XL users printing *heavy density images* at High speed on the High Capacity Stacker accessory might benefit from use of “print page separators” as a means to prevent printed images getting damaged by the landing on top of new incoming pages\* or during manipulation of the printed pages at a later stage.

*\*In certain environmental conditions on some papers and printing heavy density images new incoming pages could cause marks to printed samples already in the stacker as they land on top or cause ink transfer from printed side of previous page to back side of new page on top.*

### 2. Procedure

The proposed procedure is to alternate each poster print with a sheet of unprinted paper (soft and light paper type like plain paper or Bond) that will serve as a protective layer for the printed image.

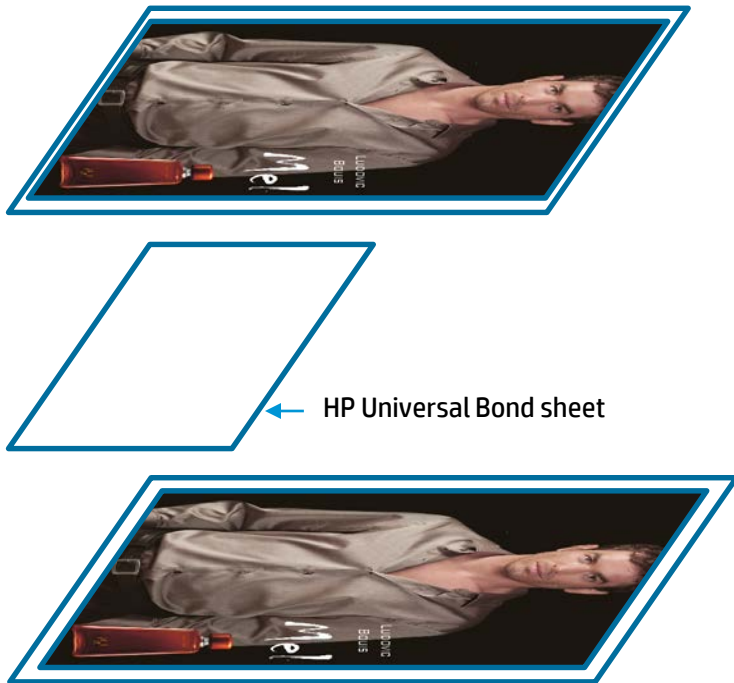
Solution can be applied directly on the PageWide driver by configuring the print so an empty page of light media is laid on top of each High density poster printed manually by the user.



# 1.2 Workaround Solutions (cont'd)

- **Unprinted plain paper in between prints**

**Marks disappear using unprinted Paper among Prints**



# 1.2 Workaround Solutions (cont'd)

## ➤ Margin

Visible mark mitigation but does not fix the problem



30cm

**Test with 300 mm  
and 400 mm Margin**

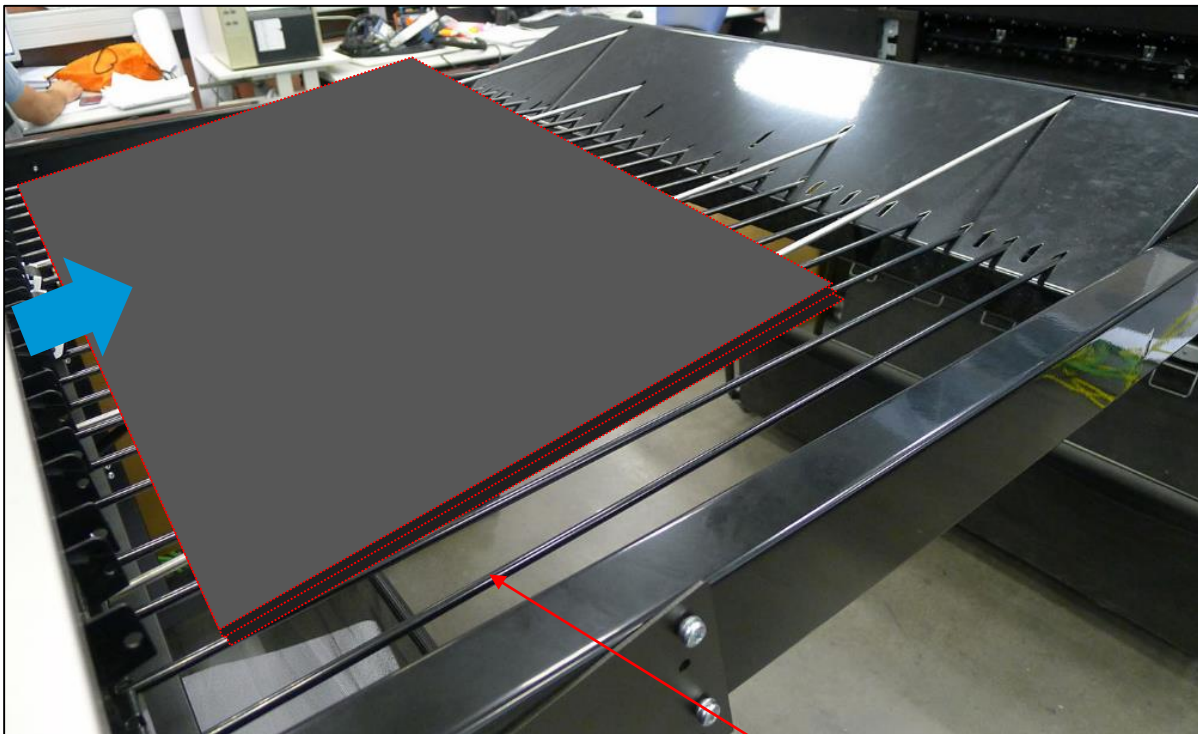


40cm

# 1.2 Workaround Solutions (cont'd)

## ➤ Pile of Prints to Reduce Impact of HC stacker Bars

**STACKER  
OUTPUT**



**HC Stacker tray**

# Manual procedure

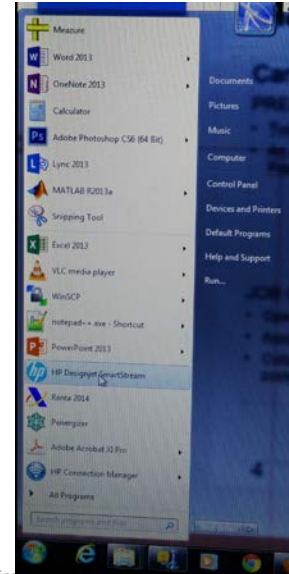
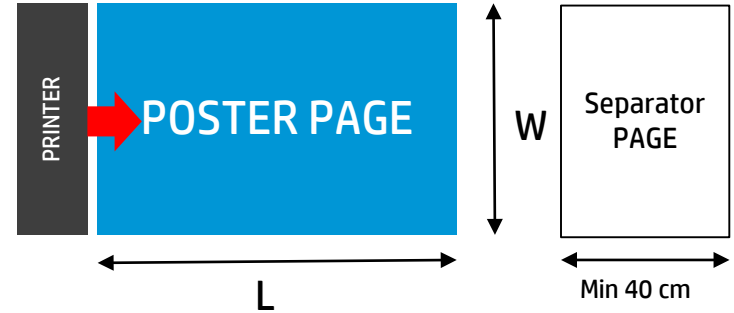
Can be used when Printing High density images on sensitive Poster papers.

## PREPARATION

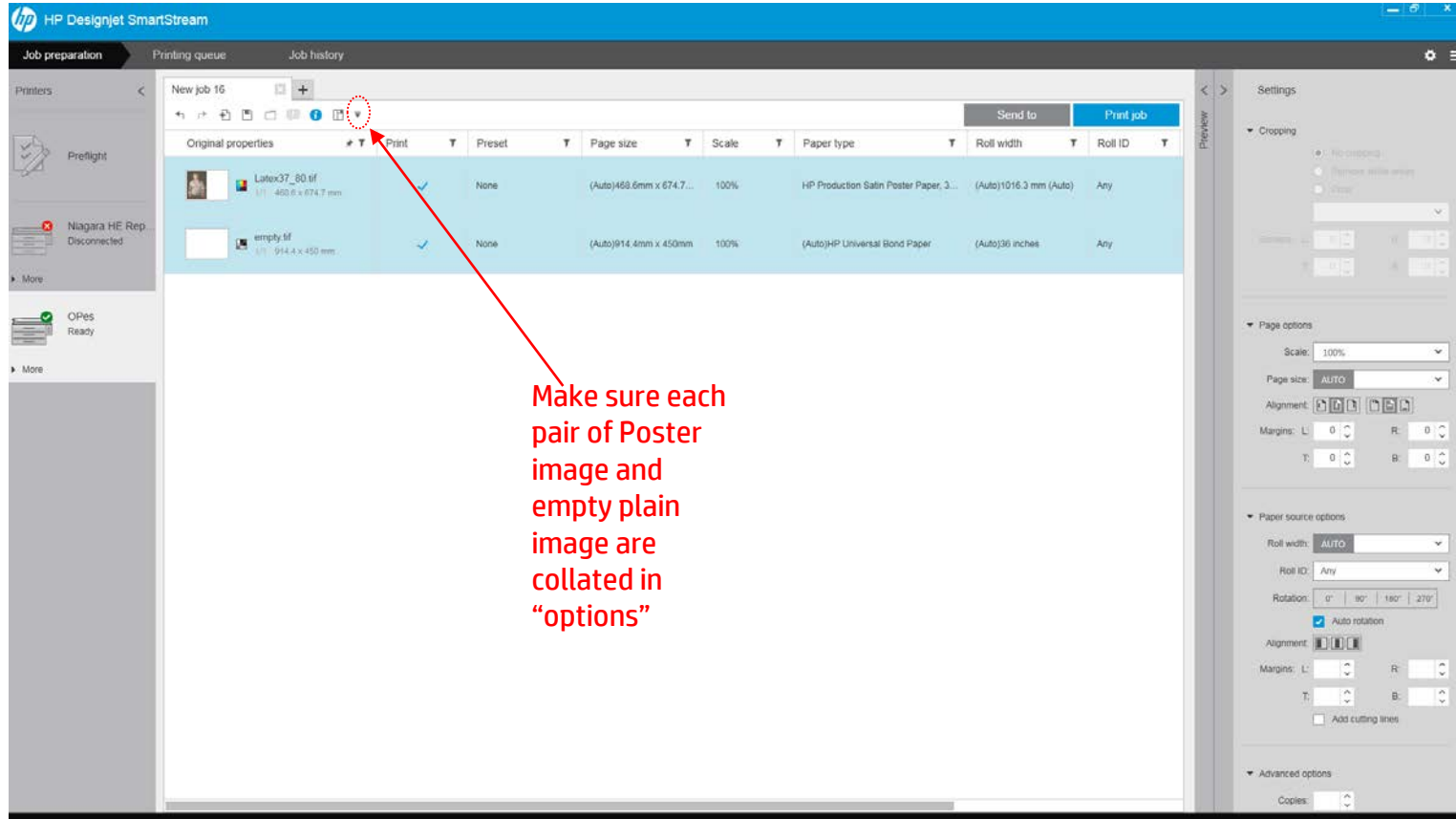
- Two rolls must be loaded: the selected Poster Paper and a light inexpensive plain paper.
- An empty image the size of the area we want to cover must be created before hand. Minimum size recommende = width of Poster paper x 40 cm / 15.74 inch

## JOB CREATION



- Open Driver and load images into the job
- Assign empty image to plain paper roll
- **Collate** each diferent poster image with one empty plain page so that the Printer sends one empty plain paper page after each poster page.



# Preparation of Job with Separator in Driver



The screenshot displays the HP Designjet SmartStream software interface. The main window shows a table of job properties for 'New job 16'. The table has columns for 'Original properties', 'Print', 'Preset', 'Page size', 'Scale', 'Paper type', 'Roll width', and 'Roll ID'. Two rows are visible: one for 'Latex37\_80.tif' and another for 'empty.tif'. A red arrow points to the 'Print' button in the first row, with a red text box explaining that each pair of poster image and empty plain image should be collated in 'options'.

Original properties	Print	Preset	Page size	Scale	Paper type	Roll width	Roll ID
 Latex37_80.tif 460.6 x 674.7 mm	<input checked="" type="checkbox"/>	None	(Auto)460.6mm x 674.7...	100%	HP Production Satin Poster Paper, 3...	(Auto)1016.3 mm (Auto)	Any
 empty.tif 914.4 x 450 mm	<input checked="" type="checkbox"/>	None	(Auto)914.4mm x 450mm	100%	(Auto)HP Universal Bond Paper	(Auto)36 inches	Any

Make sure each pair of Poster image and empty plain image are collated in "options"

The right sidebar shows settings for the job, including Cropping, Page options, Paper source options, and Advanced options. The 'Page options' section shows Scale: 100%, Page size: AUTO, and Alignment: [Top Left, Top Center, Top Right, Bottom Left, Bottom Center, Bottom Right]. The 'Paper source options' section shows Roll width: AUTO, Roll ID: Any, Rotation: 0°, 90°, 180°, 270°, and Auto rotation: ☒. The 'Advanced options' section shows Copies: 1.